

CLOSED COMPANY

Version 12/12



METAL DETECTOR METRON 05 POWERLINE

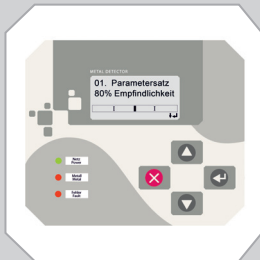
METAL DETECTOR WITH ROUND APERTURE FOR THE
INSTALLATION IN FREE FALLING BULK MATERIAL TRANSPORT.

- Detects **all Metals** in solid products or as loose parts.
- Highest sensitivity in all places.
- Immune against electromagnetic interference.
- Convincingly simple operation.
- Easy installed industrial design.
- A worthwhile investment for clean products.

MESUTRONIC
Metal Detection made in Germany

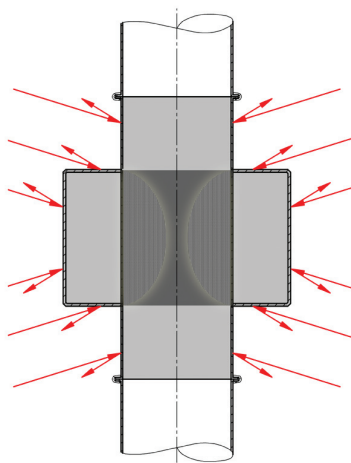
METRON 05 POWERLINE

Metal Detection made in Germany means:



- Efficient and cost saving commissioning and operation is assured with easy to understand menu text, simple 4 pad operation and a backlit Graphic-LCD display.
- High detection accuracy in a broad conveyor speed range, from 0,01 m/sec to 30 m/sec - due to state-of-the-art digital technology.
- Optimal detection results in all uses with the correct detector sizes. Standard detectors are available for 80 to 300 mm pipe diameters. (Other diameters and shapes such as square or rectangular are available).
- Reliable protection. Only authorized operators that know the 4 digit code can access the 3 operating levels of the metal detector. Chosen functions can be rendered freely accessible for any user by the administrator (direct dial button).
- The continuous working selfdiagnosis system offers the highest test sensitivity. It monitors fifty eight parameters and indicates reliably every system malfunction. Indicative text messages are useful and save time.
- Always informed. Operational and event data is stored in a non-volatile memory. The data can be printed or stored as data in an SD card. Up to 125 devices can be centrally managed and controlled through a bus line (CAN-bus, Ethernet or WLAN). We are always there when you need us with mesuREMOTE, the remote control module from MESUTRONIC.

Detailed information can be found in our technical data sheet.



Unconditionally safe - without metal free zone

PowerLine metal detectors do not require a separate sensing tube which has to guide the material thru the coil without contact. For this reason MESUTRONIC is the only company that offers a detection system in monoblock version. The input and output flanges are directly connected to the detector housing. After the installation of the transport system the detector is immune against electromagnetic interference. Nearby moving metal parts do not affect the detection system.

Convenient and cost effective

Another advantage of the monoblock version is the fast installation. The metal detector is fixed to the piping with clamps or flanges - that's all! This saves time and money.

Challenge us!

Explosion proof versions are routine tasks for MESUTRONIC. Specify your application, MESUTRONIC offers the optimum solution!

MESUTRONIC

Metal Detection made in Germany

MESUTRONIC Gerätebau GmbH • Hackenfeld 13 • D-94259 Kirchberg, Wald
Tel.: +49- (0)9927 / 9410-0 • Fax: +49- (0)9927 / 1732
E-Mail: sales@mesutronic.de • www.mesutronic.de